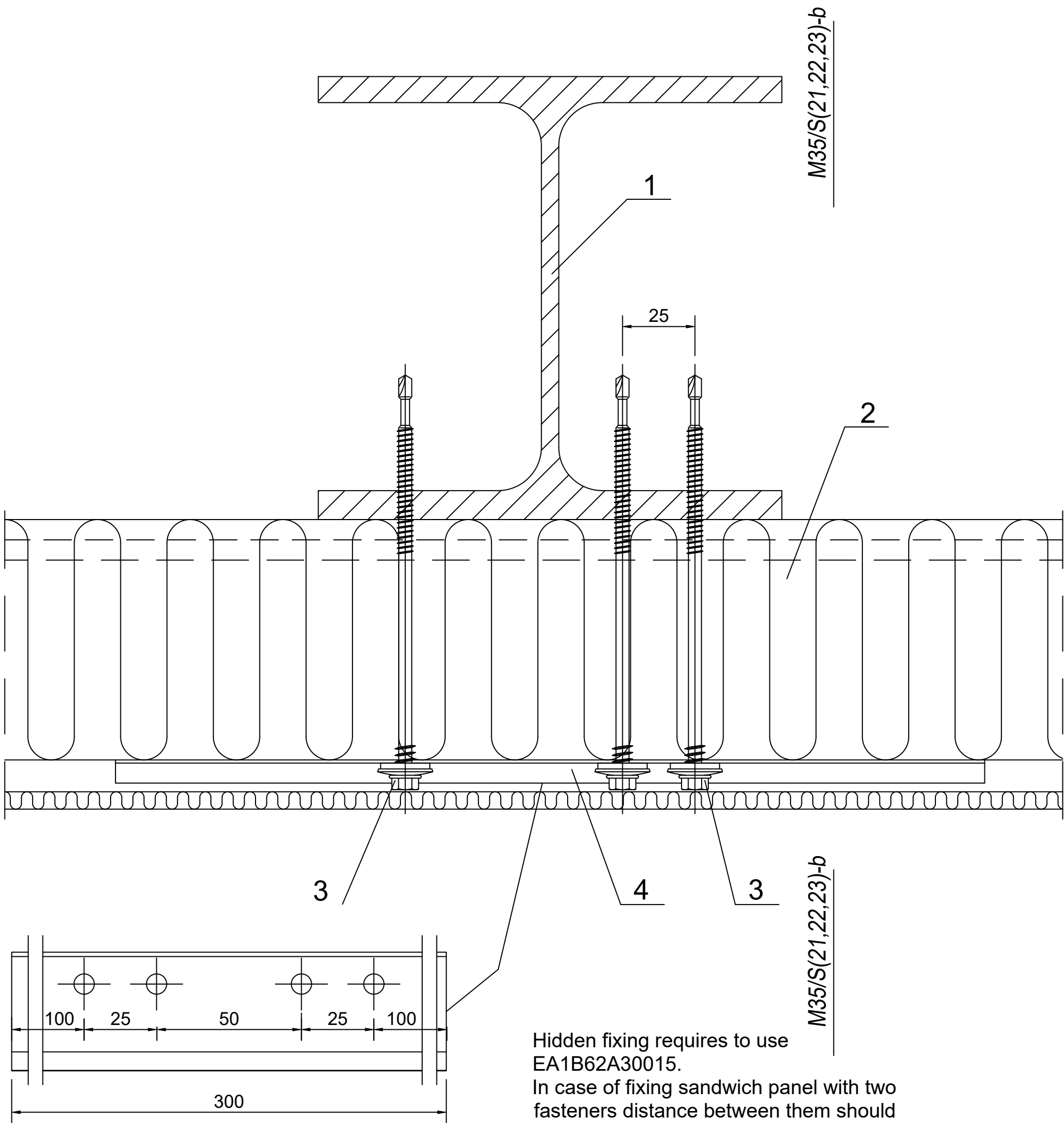


|                    |           |                             |          |      |
|--------------------|-----------|-----------------------------|----------|------|
| Date               | Rev. date | Work nr.                    | Drw. nr. | Rev. |
| Drawn by<br>Ruukki | Rev.      | M35/S24                     | -        |      |
| Scale<br>1:2       | Building  | File nr.<br>P2021/001-00036 |          |      |



Hidden fixing requires to use  
EA1B62A30015.  
In case of fixing sandwich panel with two  
fasteners distance between them should  
be at least 50 mm.  
Quantity of fastners should be calucaulated  
by using program TrayPan.

- 1. Steel column acc. to engineering design of the structure.
- 2. Ruukki nSPD WE.
- 3. Panel fastener for hot-rolled steel column or for cold-bentsteel column.
- 4. EA1B62A30015 fastener.